

SR Scales®

by **SR®** Instruments, Inc.

Model SRV945-BT



**Portable Platform Scale
App Enabled Wireless**

Operating and Service Manual

TABLE OF CONTENTS

TABLE OF FIGURES.....	2
PACKING CHECKLIST – MODEL SRV945-BT	3
ASSEMBLY.....	4
SYSTEM DESCRIPTION AND INTENDED USE.....	5
STORAGE AND TRANSPORTATION	5
CLEANING AND DISINFECTING	6
SPECIFICATIONS.....	7
BUTTON FUNCTIONS	8
BASIC SYSTEM OPERATION.....	9
BATTERY REPLACEMENT	9
WIRELESS PAIRING	10
SR SCALES APP	11
CALIBRATION.....	12
CALIBRATION CONT'D.....	14
TROUBLESHOOTING	14
WARRANTY.....	15

TABLE OF FIGURES

Figure 1: Assembled SRV945-BT.....	4
Figure 2: Battery Compartment.....	4
Figure 3: Button Display	8
Figure 4: SR App	10
Figure 5: Button Functions	11
Figure 6: Calibration Tolerance Table	12
Figure 7: Calibration Button (Underside of Display Board)	13
Figure 8: Button Display	13

PACKING CHECKLIST – Model SRV945-BT Portable Platform Scale

√	DESCRIPTION	QUANTITY
	PORTABLE PLATFORM SCALE	1 ea
	AA 1.5-VOLT ALKALINE BATTERIES	6 ea
	CALIBRATION CERTIFICATE	1 ea
	WARRANTY CARD	1 ea
	MANUAL	1 ea

ASSEMBLY



Figure 1: Assembled SRV945-BT

To install included six (6) AA 1.5-volt alkaline batteries, follow steps below:

- STEP 1:** Unlatch tab on the Battery Compartment cover on bottom of scale (Figure 2).
- STEP 2:** Insert batteries according to instructions on the Battery Compartment holder.
- STEP 3:** Replace Battery Compartment cover.



Figure 2: Battery Compartment

REPLACEMENT PARTS AND ACCESSORIES

Part #	Description
CA9261	Display Label
FK2284T51	Replacement Foot

Continued next page

SYSTEM DESCRIPTION AND INTENDED USE

SYSTEM DESCRIPTION

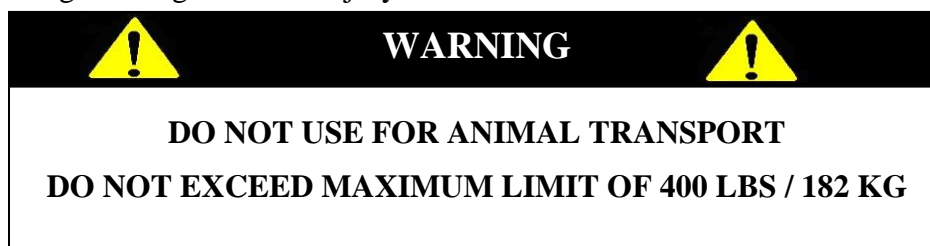
The SRV945-BT Portable Platform Scale is a low profile design, which allows the animal easy step access. The SRV945-BT Scale can be used in a fixed location or as a portable scale. The Scale employs the latest in microprocessor and load cell technology to provide accurate and repeatable weight data. Four (4) identically matched transducers are strategically placed to ensure an accurate representation of the animal's weight.

The animal's weight is displayed on an LCD screen. With a push of a button, weight data may be viewed in either pounds or kilograms.

The SRV945-BT Platform scale is equipped with a wireless communication module. By waking the scale up with the "WEIGH" button the wireless feature is turned on. Then use the free SR Scales app (Google Play store) to connect with the scale to allow for remote wireless operation.

INTENDED USE

The SRV945-BT Portable Platform Scale is a lightweight portable scale designed for use as a weighing system for animals not exceeding 400 pounds or 182 kilograms, gross weight. Please read the following warnings to avoid injury to the animal or attendant.



STORAGE and TRANSPORTATION

STORAGE

If storing this equipment for periods longer than three (3) months, remove the batteries. To maintain proper operation of this instrument, storage and transport conditions should not vary outside the following conditions: Relative Humidity 0% to 85%, Ambient Temperature 14°F to 122°F (-10°C to +50°C).

TRANSPORTATION

The SRV945 Portable Platform Scale's lightweight design allows for easy transportation for on the go applications.

CLEANING and DISINFECTING

CLEANING

To clean the display / user interface:

- Wipe surface with clean soft cloth dampened with water and then dry with clean soft cloth.
- Do not spray liquid directly onto interface surfaces. Use only a damp cloth.

To clean patient contact areas:

- Use soft bristle brush with mild soap and water, keeping water away from the display / user interface. Pat dry with a clean cloth, or allow to air dry.
- Do not use abrasive materials to clean scale surface to prevent damage to the surface finish.

DISINFECTION

- Follow manufacturer's instruction on the proper use of commercially available disinfectants.
- Disinfectant solutions with 1% sodium hypochlorite or 70% isopropyl alcohol are suitable for display / user interface and other scale contact surfaces.

To disinfect the display / user interface:

- Use a soft cloth dampened with disinfectant or a damp disposable disinfectant cloth. Cloth cannot be dripping wet.
- After disinfecting, use a soft cloth dampened with clean water and dry with a soft clean cloth to prevent buildup of material on display.
- Do not spray liquid directly onto interface surfaces. Use only a damp cloth.

To disinfect patient contact areas:

- Apply disinfectant solution to patient contact areas, keeping excess moisture away from the display / user interface.
- Patient contact area should remain wet with disinfectant solution for six minutes. Pat dry with a clean cloth, or allow to air dry.

WARNING: EXPOSURE TO EXCESSIVE LIQUID WILL DAMAGE USER INTERFACE KEYPAD.

WARNING: DO NOT USE PRESSURIZED WATER OR STEAM. THE SCALE SYSTEM CONTAINS ELECTRONIC COMPONENTS THAT MAY BE ADVERSELY AFFECTED BY EXPOSURE TO SUCH AN ENVIRONMENT.

SPECIFICATIONS

MAXIMUM WEIGHT CAPACITY	400 lb / 182 kg
PLATFORM SIZE	24 in x 36 in x 2 in (61 cm x 92 cm x 5 cm)
DISPLAY TYPE	1.0" LCD display with 5 active digits
DISPLAY RESOLUTION	0.2 lb / 0.1 kg
ACCURACY	0.2% +/- 2 digits of displayed resolution for calibrated range
AUTO ZERO	One button operation
AUTO POWER DOWN	Approximately 300 seconds
AVERAGING	Automatic digital filter
POWER SUPPLY	Six (6) AA 1.5 volt alkaline batteries
CALIBRATION	Calibration is traceable to NIST
OPERATING CONDITIONS	Normal operating conditions for this product: Ambient Temperature Range: 68°F to 85°F (20°C to 30°C), Relative Humidity Range: 0%-85%. Avoid exposure to high-pressure water or steam.
TRANSPORT and STORAGE	Storage and transport conditions should not vary outside the following conditions: Relative Humidity 0% to 85%, Ambient Temperature 14°F to 122°F (-10°C to +50°C). Remove batteries if storing longer than three (3) months.
WIRELESS REQUIREMENTS	Refer to the SR Scales App on the Google Play store for further information.

BUTTON FUNCTIONS

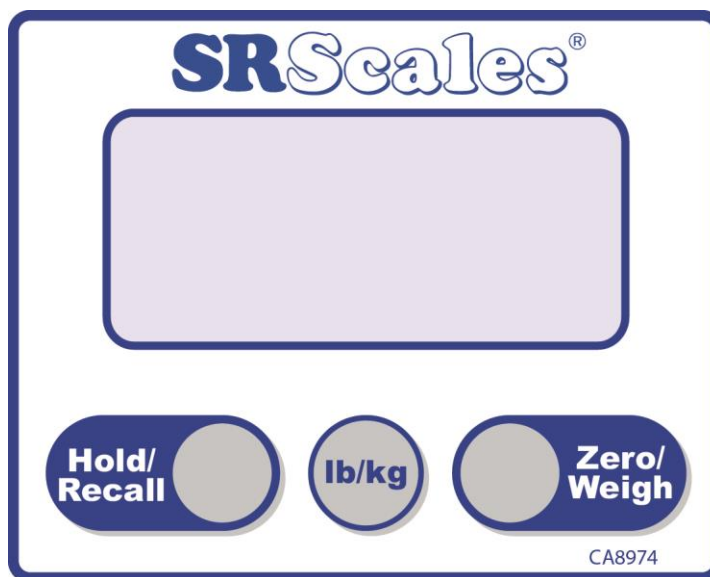


Figure 3: Button Display

ZERO/WEIGH



The “**ZERO/WEIGH**” button is used to zero the system before placing a patient onto the scale system. Ensure that nothing is in contact with the weighing surface during this procedure. The display will read “**0.0 LB**” (or **KG**). The button also wakes up the display and shows the patient’s weight if it should Auto Power Down before the weighing process is done.

HOLD/RECALL



The “**HOLD/RECALL**” button freezes the displayed weight and stores it away in memory. Press “**HOLD/RECALL**” to store the weight into memory. To recall last weight reading, press “**HOLD/RECALL**” button once scale has shut down.

LB/KG



Weight data may be viewed in either pounds or kilograms. Pressing the “**LB/KG**” button allows the operator to toggle between the two readings. Pounds are displayed in a resolution of 0.2, kilograms are displayed in a resolution of 0.1.

BASIC SYSTEM OPERATION

SETTING SYSTEM ZERO



Make sure the scale is free and clear of any obstructions. Press and hold the “ZERO/WEIGH” button to zero the system. In a few seconds, the display will read “0.0 LB” (or **KG**). It is recommended that the system be zeroed prior to each new patient.

After the scale has been set to zero, position the patient on the scale. Display will indicate the patient’s weight in either pounds or kilograms.

In this default mode, the weighing surface remains active. If scale shuts down, press the “ZERO/WEIGH” button once to wake display and take reading.

HOLD/RECALL



The scale display is designed to automatically lock the reading on the display, and store the reading in memory, once the weight is stable. If scale cannot lock in reading due to patient movement, press the “HOLD/RECALL” button to automatically lock the display and store the reading.

To return to **WEIGH** mode when finished, press the “ZERO/WEIGH” button once. The display will become active.

Once the scale has shut down, the last stored weight can be recalled by pressing the “HOLD/RECALL” button. Last stored weight will be displayed until the scale shuts down or the “ZERO/WEIGH” button is pressed.

BATTERY REPLACEMENT

The Portable Platform Scale contains six (6) AA alkaline 1.5-volt batteries. The low battery indicator is displayed when the battery power is insufficient to power the scale.

Refer to Assembly Instructions (Figure 2).

WIRELESS PAIRING

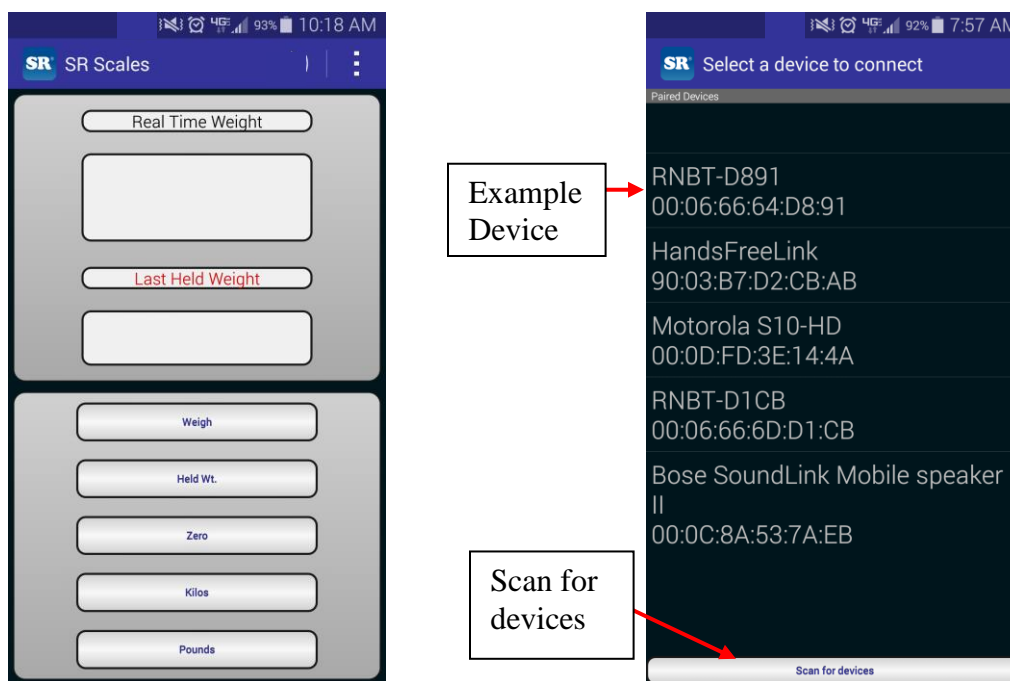


Figure 4: SR App

1. Using a supported Android device open the SR Scales application.
2. Turn the scale display on and scan for wireless devices on the Android device by pressing the wireless icon in the application and then pressing “Scan for devices”.
3. Locate the scale wireless module in the list of devices. The scale’s wireless ID is listed on the Calibration Form
4. Select the appropriate device and select pair.
5. When the device is connected it will quickly flash “Connected to (device name)” on the bottom of the Android device screen.
6. Ensure that the Android Device is communicating with the scale by placing a load on the scale and verifying the reading on the SR Scales App in the “Real Time Weight” portion of the display.

SR SCALES APP

Use the free SR Scales app (Google Play store) to connect with the scale from any Android device to allow for remote wireless operation.

Use your Android device to display weight and control the SRV945-BT scale functions (Figure 5). Ensure your remote display indicates “**CONNECTED**” before use.

The “**WEIGH**” button will display weight in pounds or kilograms as selected.

The “**Held Wt**” button allows access to the last stable weight that was achieved.

The “**ZERO**” button is used to zero the system.

The “**KILOS**” button allows weight data to be viewed in kilograms, displayed in a resolution of 0.1 kilograms.

The “**POUNDS**” button allows weight data to be viewed in pounds, displayed in a resolution of 0.2 pounds.



Figure 5: Button Functions

CALIBRATION

NOTE: Ensure that nothing is in contact with the scale system during this procedure. Remove hands from the system when noting the displayed calibration results.

CHECKING CALIBRATION

STEP 1: Select two (2) known calibrated weights, traceable to NIST.

NOTE: The first weight should be at least 200 pounds (half of the maximum scale capacity). The second weight should be less than half of the first weight. **DO NOT USE** barbells or uncalibrated weights.

STEP 2: Zero the scale by pressing and holding “ZERO/WEIGH” button.



STEP 3: Place the first calibrated weight on the scale. Wait for scale to stabilize; note scale reading. Remove weight.

STEP 4: Place second calibrated weight on scale. Wait for scale to stabilize; note scale reading. Remove weight.

STEP 5: The scale readings for both weights should be within the Calibration Tolerance Table plus or minus one digit of displayed resolution (Figure 6).

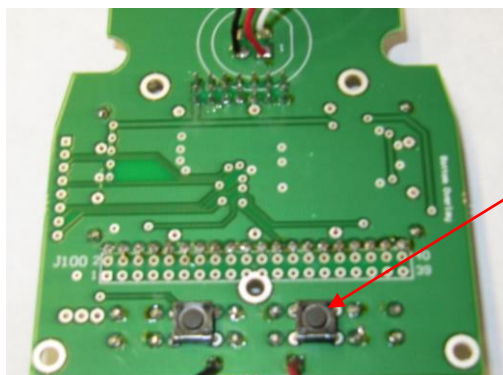
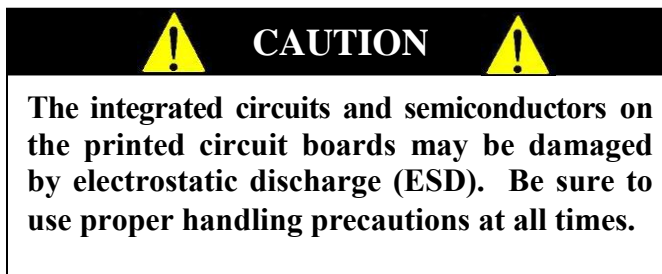
CALIBRATION TOLERANCE TABLE		
LOW LIMIT	APPLIED LOAD	HIGH LIMIT
20.0	20.0	20.0
50.0	50.0	50.0
99.8	100.0	100.2
199.6	200.0	200.4
299.4	300.0	300.6
399.2	400.0	400.8

Figure 6: Calibration Tolerance Table

 IMPORTANT 	
CALIBRATION CHECK	Qualified service personnel only should perform this procedure. Load cells have no user serviceable components and should not be tampered with for any reason. Re-calibration is generally not required, but should be verified periodically to ensure accuracy. The recommendation for calibration check is at least once every 12 months, or as individual maintenance policy requires.

CALIBRATION cont'd

SETTING CALIBRATION



**Figure 7: Calibration Button
(Underside of Display Board)**

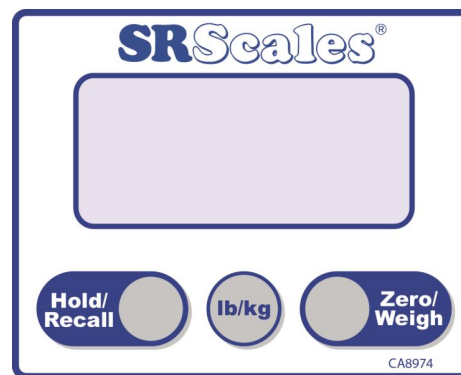


Figure 8: Button Display

NOTE: Ensure that nothing is in contact with the scale system during this procedure and that all four (4) feet are touching a level surface. Remove hands from the system when noting the displayed calibration results. (Use a known calibrated weight traceable to NIST.)

STEP 1: Remove the display cover from bottom of scale

STEP 2: Press the “**ZERO/WEIGH**” button to turn the scale on.

STEP 3: Press “**Lb/Kg**” button and toggle to select lb.

STEP 4: Press the **Calibration** button on rear of display. Display will read “**CAL**”

STEP 5: Toggle the “**ZERO/WEIGH**” button to read “**FULL**” then press “**HOLD/RECALL**”.

STEP 6: Display will read “**440.0**”, set this value to the value of the selected weight

- Press “**HOLD/RECALL**” to select a digit position
- Press the “**ZERO/WEIGH**” button to change the value of the digit
- When display reads “**SAVE**”, press the “**HOLD/RECALL**” button to cycle through “**Savd**” and return to “**CAL**”

STEP 7: Toggle the “**ZERO/WEIGH**” button to read “**2 Pt**” then press “**HOLD/RECALL**”.

Continued next page

CALIBRATION cont'd

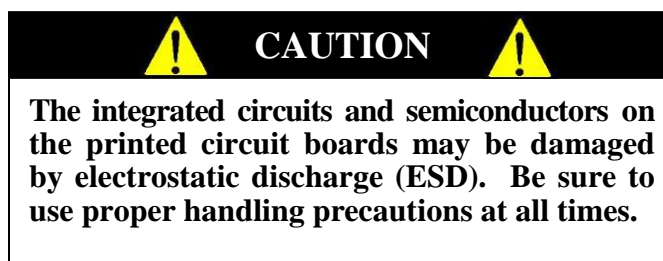
STEP 8: Display will read “ZERO”. Ensure no weight is on the platform, then press “HOLD/RECALL”

STEP 9: Display will read “FULL”. Add the selected weight to the platform. Wait for the weight to stabilize, then press “HOLD/RECALL”

STEP 10: Press “HOLD/RECALL” to cycle through the number “.8037”. **DO NOT CHANGE THIS NUMBER**

STEP 11: When display reads “SAVE”, press the “HOLD/RECALL” button to cycle through “Savd” and return to “CAL”

STEP 12: Calibration is completed. Press the left button on rear of display to return to run mode. Allow time for scale to turn off.



TROUBLESHOOTING

SYMPTOM	REASON/CORRECTIVE ACTION
Display reads LOW	Battery needs to be replaced.
Display reads LOW	Ensure scale is on a level surface. Check to make sure all four feet are touching ground and ensure that nothing is touching bottom or sides of platform.
For additional information or assistance, phone our Service Hotline: 1-800-654-6360 or e-mail: sri@srinstruments.com	

WARRANTY

TWO (2) YEAR LIMITED WARRANTY

Each **SR Scales**[®] system is manufactured with high quality components. SR Instruments, Inc. warrants that all new equipment will be free from defects in material or workmanship, under normal use and service, for a period of two (2) years from the date of purchase by the original purchaser. Normal wear and tear, injury by natural forces, user neglect, and purposeful destruction are not covered by this warranty. Warranty service must be performed by the factory or an authorized repair station. Service provided on equipment returned to the factory or authorized repair station includes labor to replace defective parts. Goods returned must be shipped with transportation and/or broker charges prepaid. SR Instruments, Inc.'s obligation is limited to replacement of parts that have been so returned and are disclosed to SR Instruments, Inc.'s satisfaction to be defective. The provisions of this warranty clause are in lieu of all other warranties, expressed or implied, and of all other obligations or liabilities on SR Instruments, Inc.'s part, and it neither assumes nor authorizes any other person to assume for SR Instruments, Inc. any other liabilities in connection with the sale of said articles. In no event shall SR Instruments, Inc. be liable for any subsequent or special damages. Any misuse, improper installation, or tampering, shall void this warranty.

DAMAGED SHIPMENTS

Title passes to purchaser upon delivery to Transportation Company. Purchaser should file any claims for shortage or damage with the delivery carrier and should refuse any shipment that has obvious external damage.

RETURN POLICY

All products being returned to SR Instruments, Inc. require a Return Goods Authorization number (RGA). To receive an RGA, call our Customer Service at 716-693-5977 ext 103 or toll-free in the USA and Canada at 800-654-6360 ext 103.

When inquiry is made, please supply model and serial numbers, purchase order and reason for return.

Generally, deleted, damaged, and outdated merchandise will not be accepted for credit. A minimum restocking charge of 15% will be assessed on return of current merchandise unless scale is returned because of SR error.

No returns will be accepted after 30 days.

All returns are to be shipped **FREIGHT PREPAID** to: SR Instruments, Inc., 600 Young Street, Tonawanda, NY 14150.

RESTOCKING FEE

- **15% fee** will be assessed on return of current merchandise
- **No fees** will be charged if the scale is returned because of an error on the part of SR Instruments, Inc.
- **No returns** accepted after 30 days.



**Precision & Technology in
Perfect Balance®**